

# Allure ULTRA Installation Manual

---



Prepared for  
Allure

Prepared by  
Tanner Tank

5/3/2013



# Table of Contents

- Table of Contents ..... iii
- Introduction to Allure ULTRA ..... v
- Planks Needed to Complete Your Project..... 7
- So, if your room is 10' x 10' or 100 square feet, we recommend you purchases 6 cases (approx. 120 square feet) ..... 7
- Tools and Preparation ..... 9
  - Tools Needed ..... 9
  - Subfloor Preparation ..... 9
  - Condition allure prior to installation ..... 10
- Installing Allure ..... 11
- Trouble Shooting ..... 15



## **Introduction to Allure ULTRA**

The Allure ULTRA Installation Manual contains all information required for complete and proper installation of Allure ULTRA wood flooring. This manual is written in a step-by-step format making instructions easy to follow as long as user follows correct numbered order. There will also be detailed instructions on every step required to complete installation along with important “Helpful Hint” instructions pointing out complicated instructions. There are also “caution” instructions that should not be skipped, but read thoroughly instead to ensure best results. User should read each instruction fully before starting each new step in order to insure there are no mix-ups or mistakes.



## Planks Needed to Complete Your Project

Measure the length and width of the desired room or flooring area. If the room has alcoves or offsets, measure these separately. This will give you the square footage of the room or area. When purchasing Allure ULTRA wood flooring planks, be sure to purchase a minimum of 10% extra to cover mistakes, cut into smaller sections where needed and to replace parts that may get ruined later on. On larger rooms or larger flooring areas purchase an extra 5-10% additionally to the 10%. You may also wish to purchase an additional 5-10% if there are more than 6 alcoves or offsets.

Allure ULTRA comes in 47.6" x 7.5" planks or 2.48 square feet per plank. 8 planks per case = 19.8 square feet per case.

So, if your room is 10' x 10' or 100 square feet, we recommend you purchase 6 cases (approx. 120 square feet)

(Following section to be printed in clear obvious text on outside of product box.)

**Helpful Hint #1:** For best results it is important to purchase product (cases) from the same RUN # (dye lot). Different run #'s can have shade variations. Every case of allure has the run # printed on the ends of the case. Run # example: 30.08.2009.

If you do have more than one run # we highly recommend you install planks from 4 or 5 different cases from different run #'s at one time and randomly mix them into the installation as you go. This will insure a more natural looking floor.

**Caution:** Do not install allure over carpet or any foam underlayment. This product is not suitable for any outside use, sunrooms/solariums, saunas, or rooms that have the potential of flooding. We also highly recommend you do not install in rooms or homes that are not temperature controlled. Exposure to long term direct sunlight can cause damage to your floor.





# Tools and Preparation

## Tools Needed

- Utility Knife
- Straight Edge
- Measuring Tape
- Shears (for irregular cuts around objects)
- 1/8" spacers
- Floor Leveler (if subfloor is uneven)
- Pliers (to remove carpet staples if needed)

## Subfloor Preparation

The sub floor must be smooth, flat, dry, clean and solid. Carpet staples or adhesive residue must be removed to insure proper installation. Carpet staples can be removed with a pair of pliers and adhesive can be removed by scraping away residue with utility knife.

Subfloors should be flat within a tolerance of 1/8" (3mm) over a span of 4 feet. Any unevenness over 1/8" (3mm) must be sanded down or filled with a floor leveler. Voids or humps in the sub floor will prevent allure from locking properly. Humps in the subfloor may also create bulging in your wood flooring later on.

Subfloors must be carefully checked for moisture problems. Allure ULTRA is waterproof. It is NOT a water-proofer. Any moisture problems need to be addressed prior to installation. New concrete floors need to cure for a minimum of 60 days.

**Helpful Hint #2:** If laying allure over existing ceramic tile, it will be necessary to skim coat the grout lines with a floor leveler. If you install allure over an existing floor that has an embossing or grout line on it, you must skim coat with a floor leveler if the embossing or grout line is greater than 1/8" (3mm) from floor around location.

If you have an old and ugly vinyl, but don't want to pay for an expensive removal in which they may leave your floor in rough shape. Allure is the perfect answer. Any loose or damaged tiles should be patched prior to installing allure over the old floor. Never save old vinyl floors from any floor manufacturer, if you think the floor may be over 20 years old. Older vinyl floors have been known to contain harmful chemicals or materials unsafe for health.

## **Condition allure prior to installation**

You **MUST** store Allure horizontally in the room of installation for 48 hours prior to installation. Be sure the room temperature is between 65 & 85 F. Do not remove the planks from the case during this acclimation period. Maintain this temperature during installation as well. Humidity of the room needs to be maintained as best as possible as well. Wood has a tendency to expand and shrink due to moisture in the wood. Less moisture during the acclimation period is best. This will allow the wood to expand after being installed which will help keep the seams between planks tight after installation.

## Installing Allure

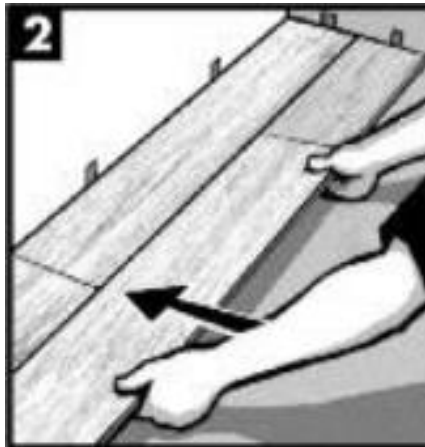
**Helpful Hint #3:** Before laying out the floor, check the wall you are starting from and make sure it is square to the opposite wall. Simply measure the room from opposite ends of the wall to the far wall. If the measurements are different you can make adjustments on the first row of allure by scribing the plank.

1. Lay a row of planks loosely without securing them to each other first to determine if you need to adjust the length of the first plank to avoid a small piece of less than 12" on the opposite wall from where you started or measure the length of the room and divide by 48" (length of one plank). If the remainder is less than 12", calculate  $\frac{1}{2}$  of the remainder and trim this amount off the first plank. The last plank should be the same length as the first one. If planks on either end are less than 12" then they may not stay secured once installation is complete. To cut a plank, simply measure and mark the plank, then using a straight edge and utility knife, simply score the plank and snap. It's that easy!



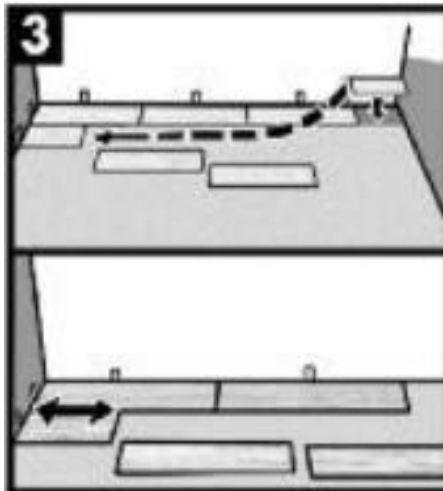
2. Installation should start in corner (left hand) and proceed from the wall with the tongue facing out away from the wall (**figure 1**). Allow a minimum gap of 1/8" (2-3mm) for subfloor movement or product expansion, which should be covered by molding. (Product expansion due to moisture as stated in "Tools and Preparation")
3. When laying the first row in a straight line interlock the short ends by inserting the tongue into the grooves at an angle of approx. 15 to 20 degrees. The tongue has to slip under the locking strip of the previous board in order to properly lock. Install each sequential plank on the short end (7.5") and be sure to line up evenly. This is very important for a good, well-sealed installation.

4. Be sure to keep the seams tight. You will feel and hear the click when locking the planks together to create a tight seam. There should be no gap visible between planks. If your seam appears to have a gap, you can immediately pull apart the planks and reapply it. Slowly lift the top plank away from the bottom plank and simply reapply them-repeating Step #3. Be careful not to pull the planks too hard or you could rip or damage the Locking Strip. Damaging the previous plank's locking strip will result in having to replace it..

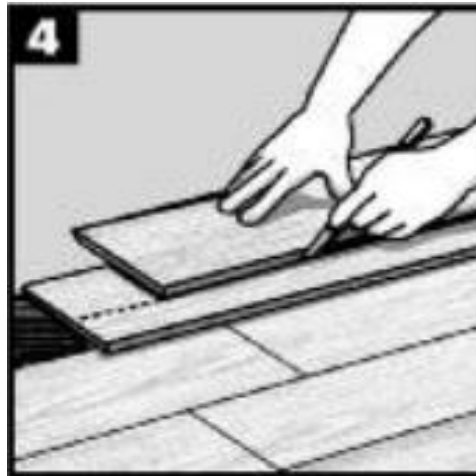


5. When installing Allure, it is strongly recommended to stagger the rows so that the short edge (7.5") seams are not in a straight uniform line. Not staggering the planks can result in loose flooring which may be accidentally pulled loose later on. We recommend the staggered random method 3'-2'-1' (**Figure 2**). However you may want to try other "patterns" of planks to suit your taste. Allure can be installed with endless possibilities-your only limitation is your own imagination!
6. Start the second row with the plank cut at about 2/3 length (32"). Measure and mark the plank, then using a straight edge utility knife, score the plank and snap.
7. Interlock the plank tightly against the first row (long side) again at a 15-20 degree angle. Interlock the short side first on the next plank, leaving it slightly away from the long side and then slide into the long side.

**Helpful Hint #4:** When cutting Allure for length, be sure to always cut the short side of the plank with the groove edge. The remaining piece can then be used on the opposite side of the room, at the end of that row (**Figure 3**) if layout permits.



8. Start the third row with the plank cut at 1/3 of a length (16"). Again the remaining piece can be used at the opposite end of the row, if the layout of the room permits.



9. Continue this pattern for the remainder of the rows to be installed. Always place the cut end of the first plank against the wall (**Figure 4**).
10. Fitting around irregular objects, no problem. Simply make a pattern out of heavy paper to fit around pipes or irregular objects. Place the pattern upon the plank and trace. Cut along trace lines using a utility knife or heavy duty scissors, and lay plank. Be sure to leave minimum of 1/8" expansion space around all fixed objects, floor vents and door frames.
11. The beauty of Allure ULTRA is the ease of installing the opposite way. You can install from both sides of the plank. This allows you to start in one room and continue through a doorway into another room with the same pattern and continue installing the floor forwards or backwards.



## **Trouble Shooting**

1. When making initial room/flooring area measurements, be sure that measurements are standard rather than metric. (Allure ULTRA wood flooring is measure in standards feet and inches; this will save you time converting measurements.)
2. Wipe subfloor clean as you lay new planks in place, this will help insure that there will be no bulging or divots in the wood flooring.
3. When talking about scoring a plank, this manual is referring the action of making a small cut that does not completely cut through the board. (A cut that only goes halfway through the plank.)